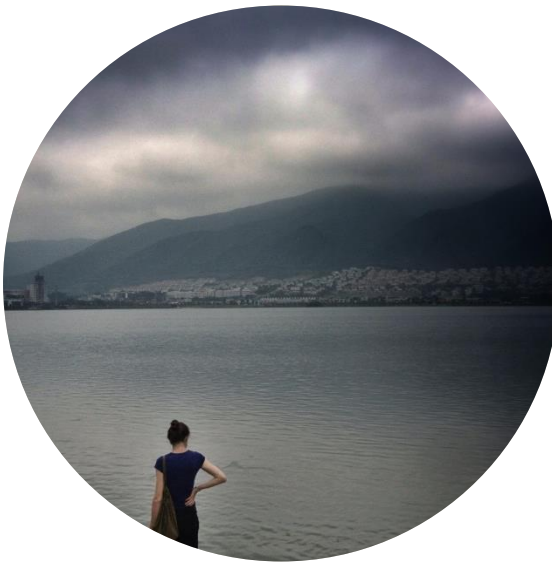


SECTORAL WATER USE IN THE PEARL RIVER DELTA

10 December, 2013, YAO Mingtian

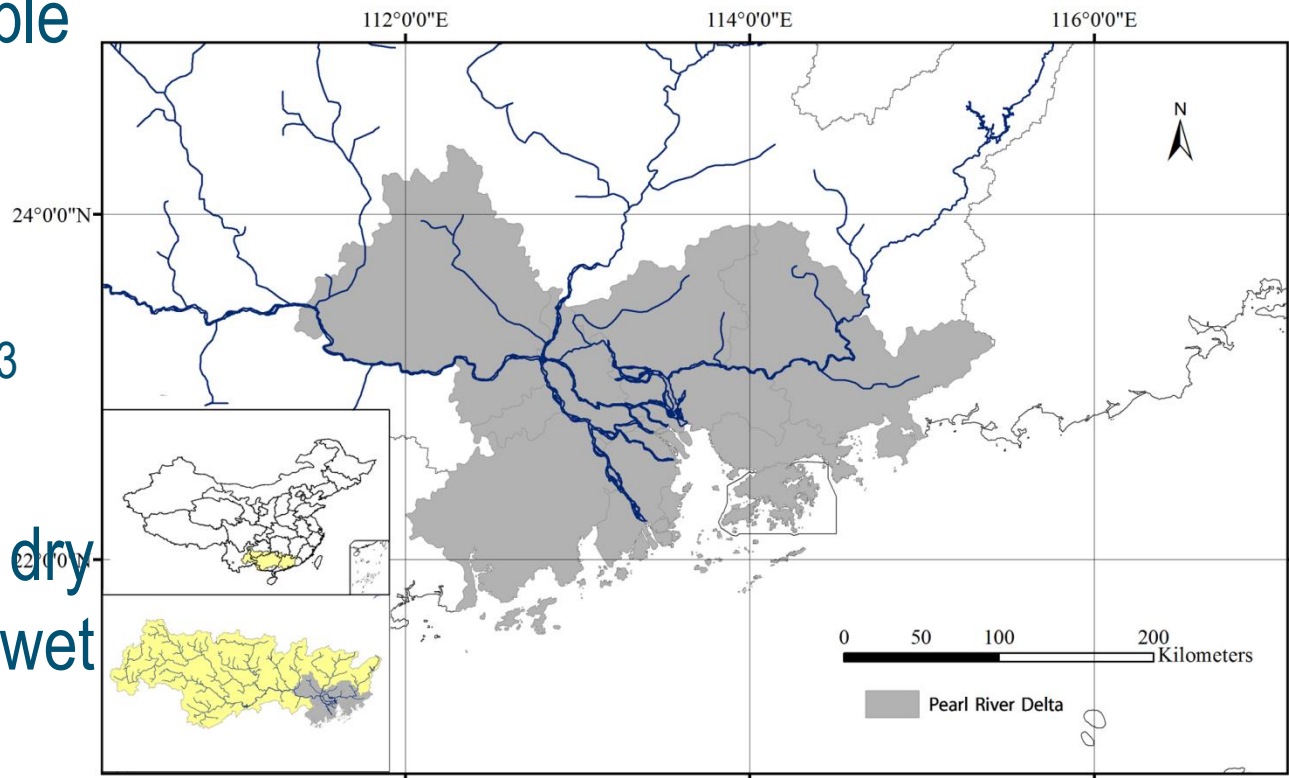


OUTLINE

- Background
- Problem Identification
- What happened in the Pearl River Delta
- Learnt and Current Works

PEARL RIVER DELTA

- 54,845 km²
- 56 million people
- Precipitation
1,700 mm
- Runoff
340 billion m³
- Discharge
4,000 m³/s dry
28,000 m³/s wet



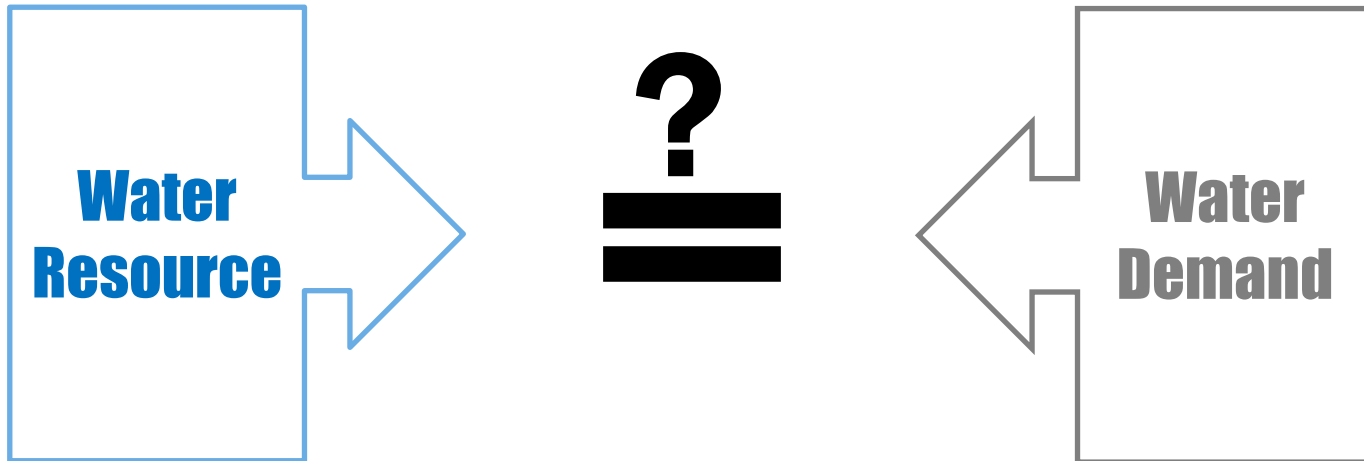
PROBLEM IDENTIFICATION

Water shortage will be a problem, in the future.

PROBLEM IDENTIFICATION

There is **NO** enough water, **NOW**.

WHAT HAPPENED?



WHAT HAPPENED?

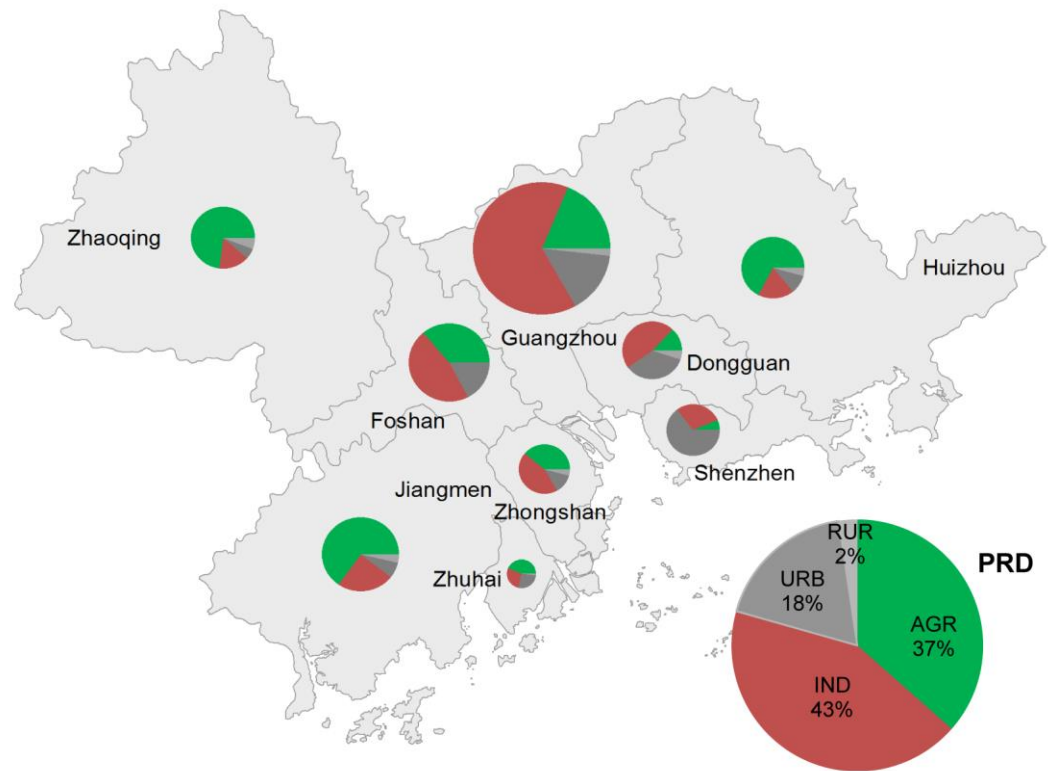
What are the major trends?

**Water
Demand**

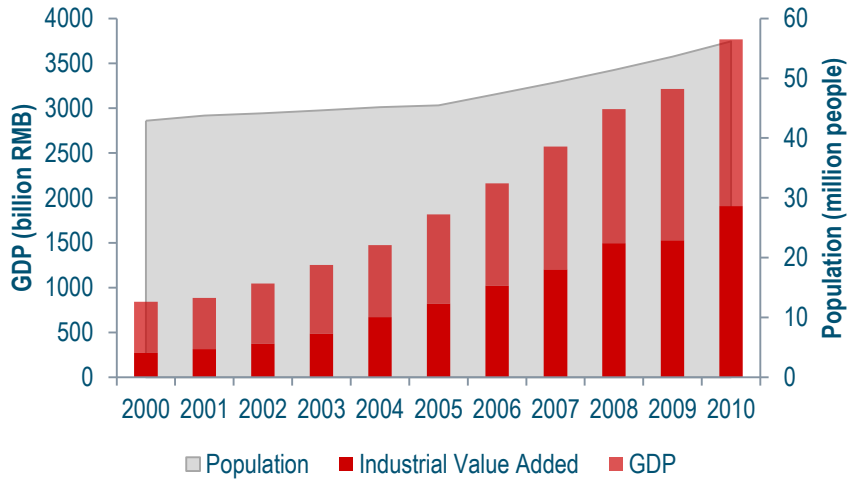
How did urbanization affect?

WATER USE IN THE PRD

- 23.7 billion m³
 - 37% - Agriculture
 - 43% - Industry
 - 20% - Domestic
- 50% Guangdong
- 5% China
- 499% NZ (2002)
- 105% Australia (2000)
- 41% Thailand (2007)
- 29% Vie Nam (2005)

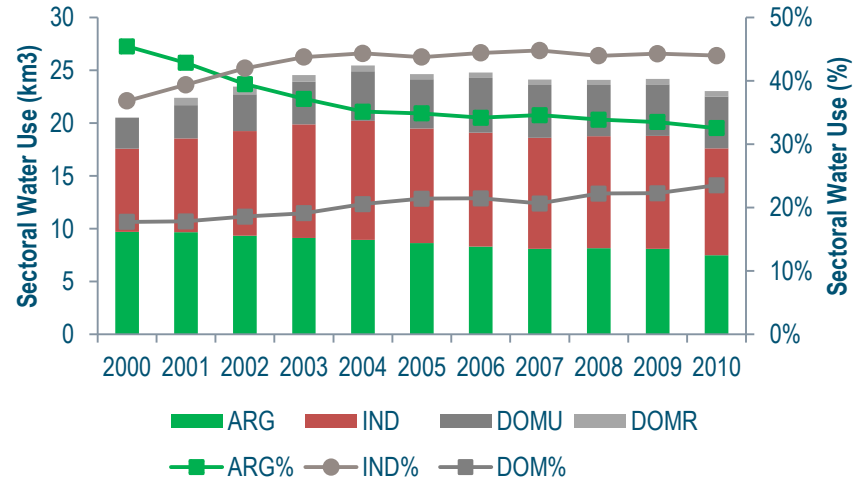


WATER USE IN THE PRD



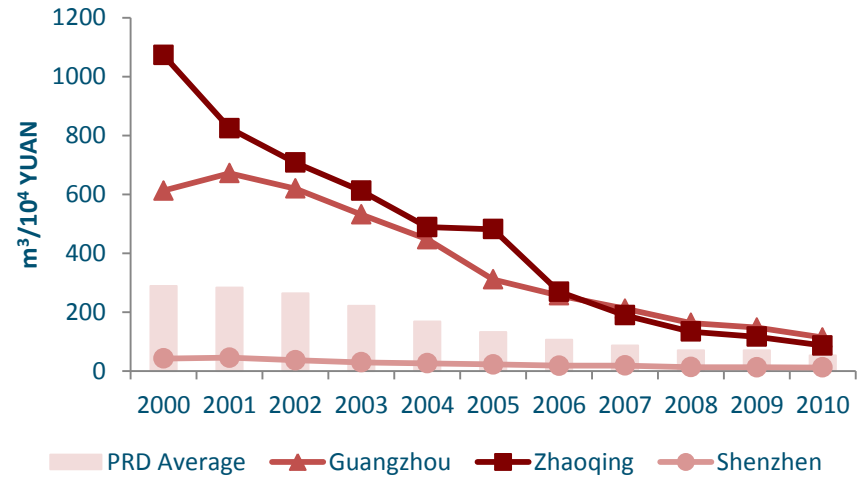
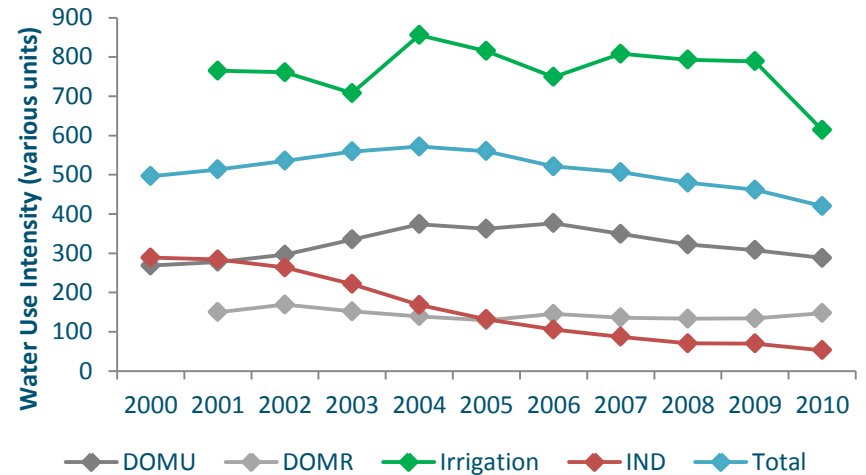
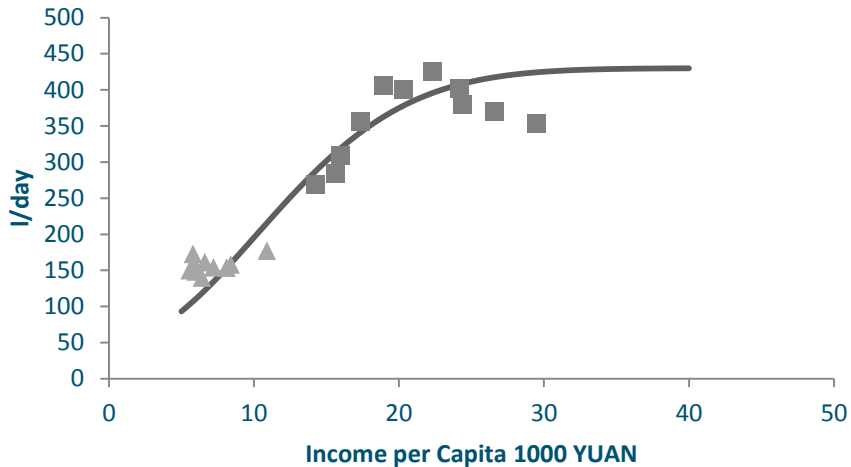
Socio-Economic Growth

Sectoral Water Use Growth

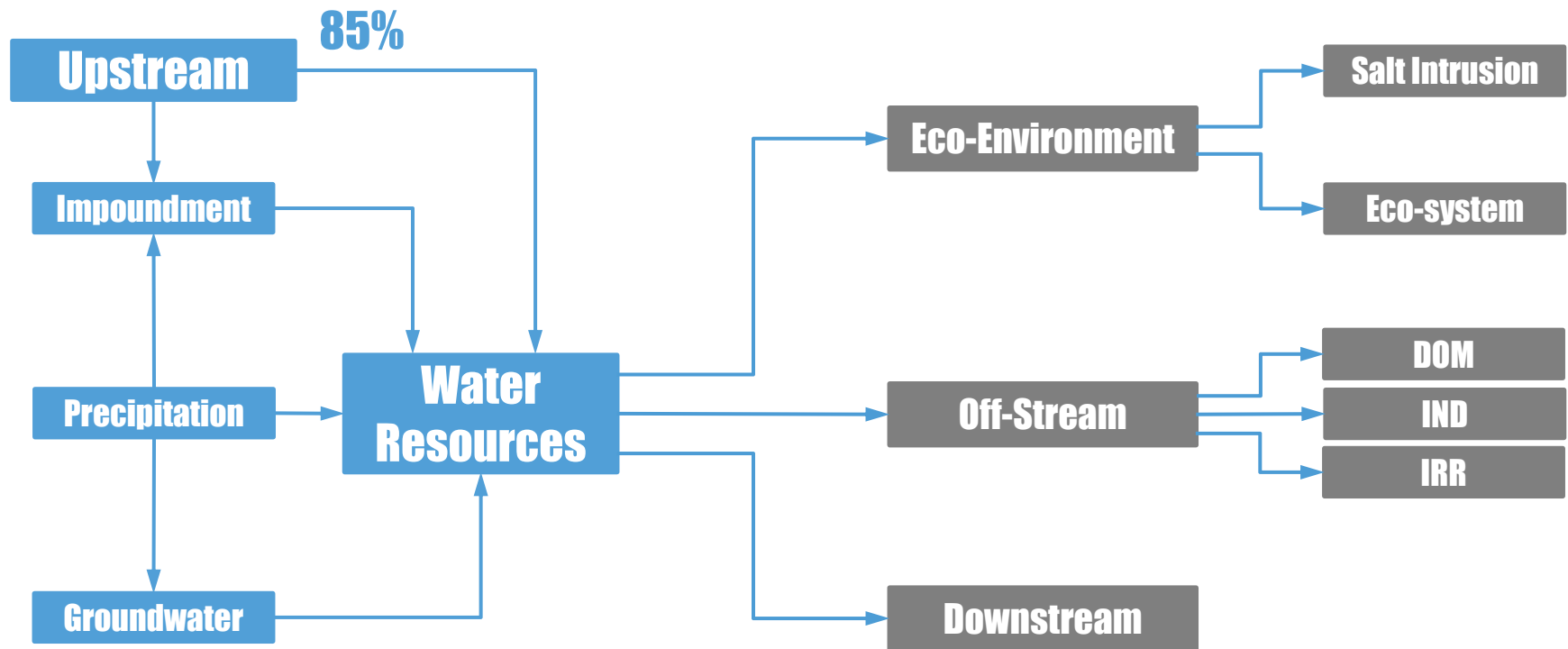


WATER USE IN THE PRD

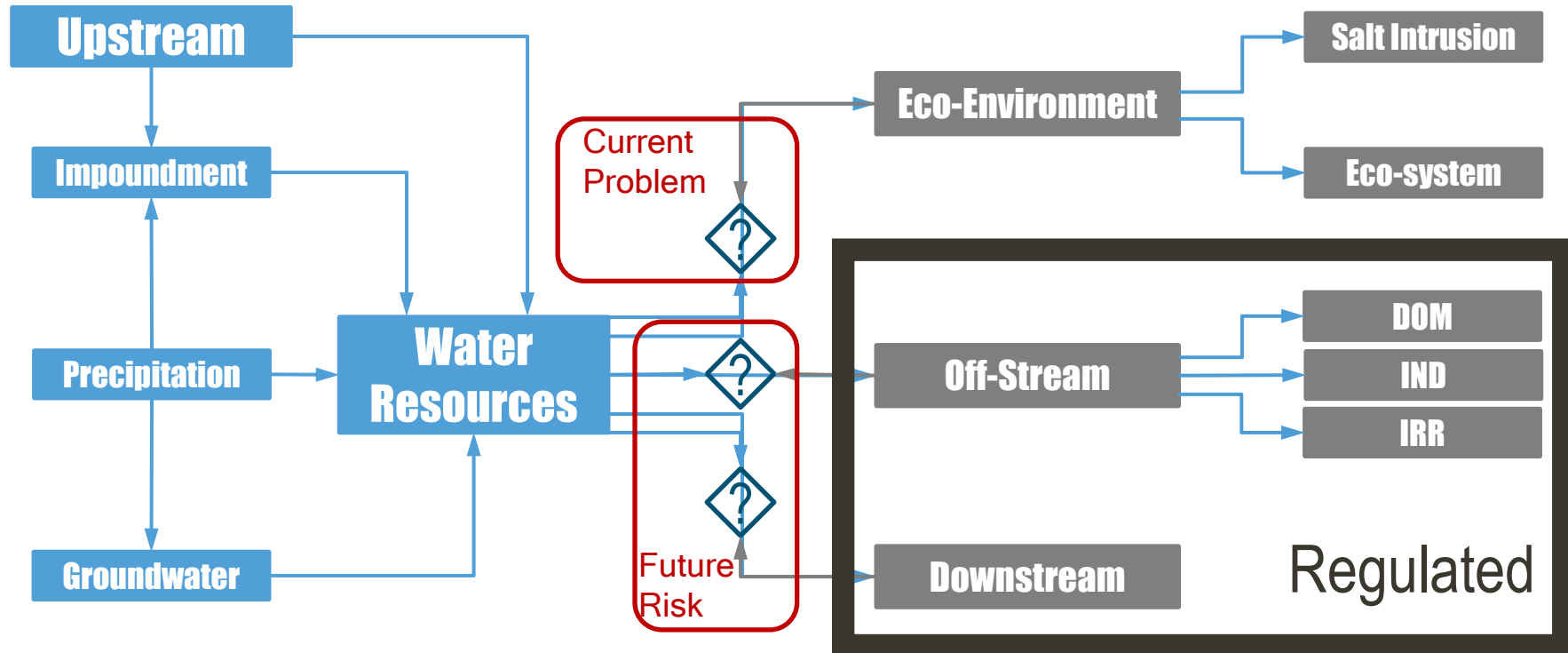
Improved water use intensity



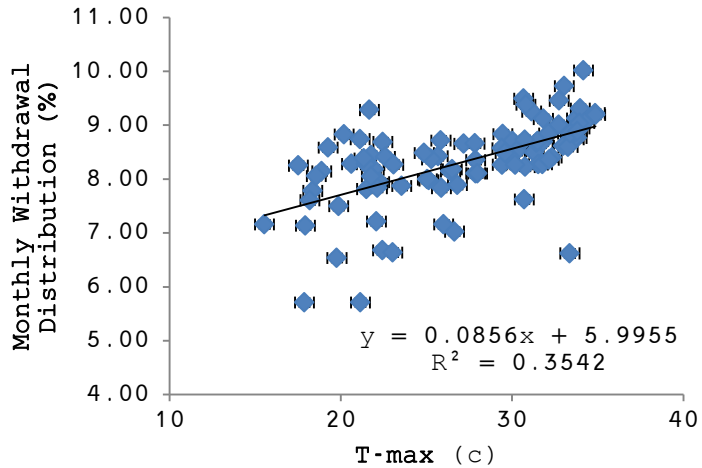
PRD WATER RESOURCE MANAGEMENT



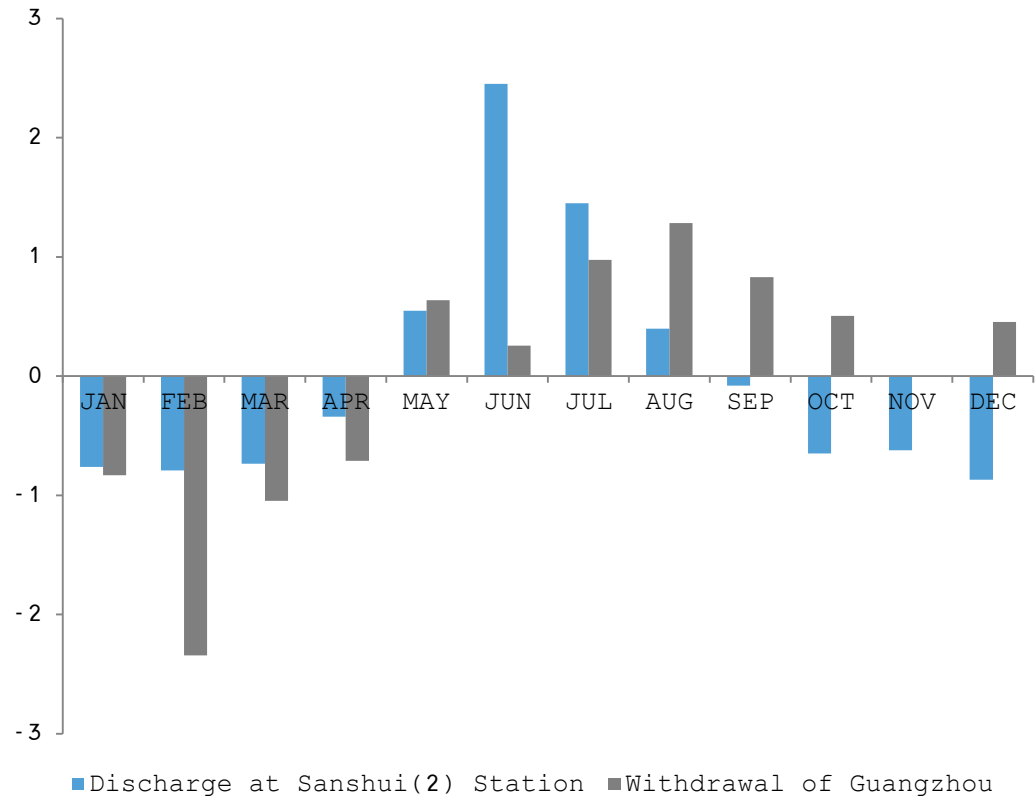
LEARNT



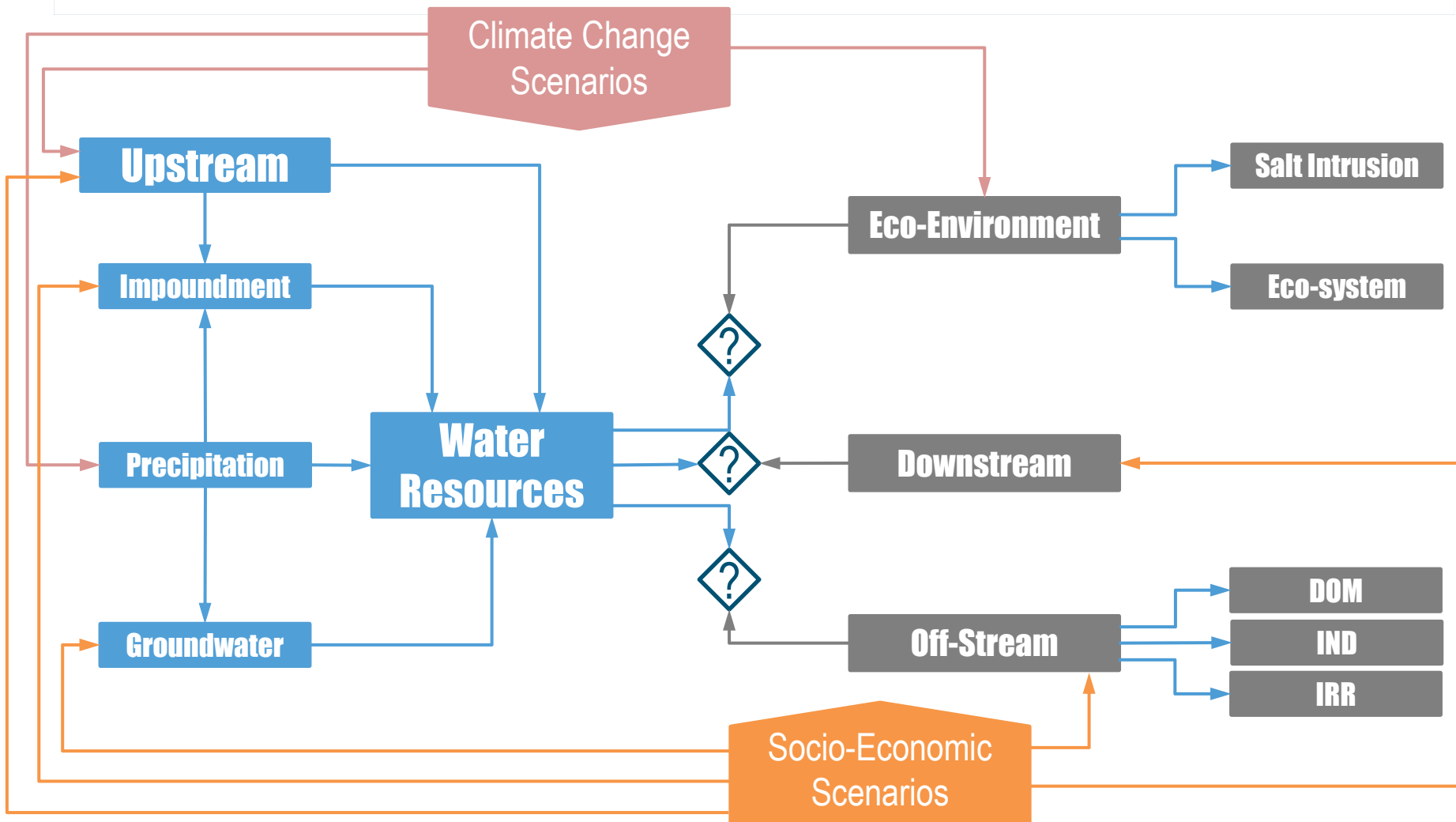
CURRENT WORKS



Monthly distribution of discharge and domestic withdrawal of Guangzhou city



CURRENT WORKS



Thank you

